

SINCE 2013

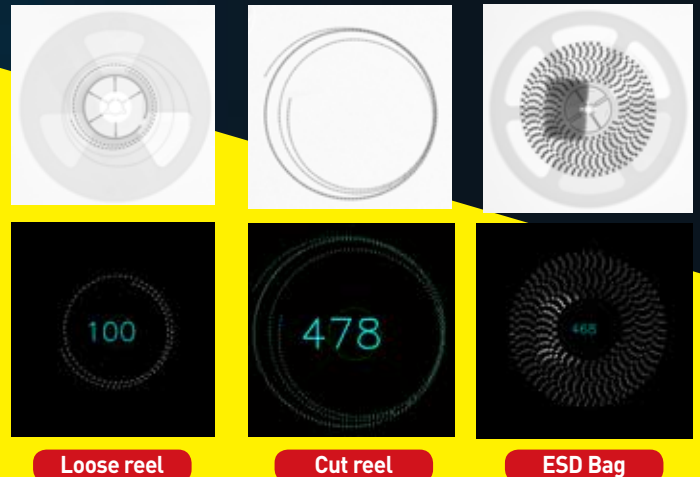
Revolutionary X-ray Chip Counter **HAWKEYE1000**

Automated X-ray Chip Counter

Fastest ROI
Latest Technology
Fast & Accurate



Revolutionary Cost-Effective System
Fast & Easy to Use
Accurate & Repeatable
Counting up to 4 reels simultaneously
Interlink ERP/MES system compatible



Loose reel

Cut reel

ESD Bag

HAWKEYE1000

Automated X-ray Chip Counter

The HAWKEYE1000 is the latest revolution in X-ray chip counting systems. In order to meet the increasing demands of our customers, we have further increased efficiency and maximized the customer's ROI.

The HAWKEYE1000 only needs one button to count various components automatically in a few seconds. The HAWKEYE1000 can also count up to four reels (180 mm) simultaneously. Various chips and components are counted, with the results sent directly to the SMD material management server (ERP system). Also during this process, a new bar code label is printed for the purpose of updating off-line records. Techvalley has been improving their X-ray Chip Counter series since 2013, to the current fifth generation Chip Counter. We are evolving the 'Automated X-ray Chip Counter' to ensure advanced, automatic counting for a wider range of components, faster and efficiently with more flexibility.

World's best X-ray component counting technology

- Counting up to 4 reels(180mm) simultaneously
- Dramatically reduces labour costs and kitting times
- Increases inventory management efficiency
- Reduces production line down-times
- Sold to and proven by many world leading companies

High performance automatic chip counting with a wide range

- Automated, accurate and fast counting (180mm~380mm)
- Connect integration ERP/MES system
- No damage to components or reels
- Counts all type of Chips (1 reel, 4 reels, Tray, Unique shapes)
- User-oriented UI configuration & Touch monitor

Safe from radiation

- Shielding cabinet guaranteeing no radiation leakage
- Double safety interlocking system
- Light curtain sensor system for the door
- Fully CE Approved



| HAWKEYE1000 | Specification |
|----------------|---------------------------------------|
| X-ray Tube | kV Range : 20 ~ 65 kV |
| | mA Range : 0 ~ 4 mA |
| X-ray Detector | Size : 430 X 430 mm FPXD |
| | Pixel Pitch : 140 um |
| Manipulator | Feeding Door Type |
| | Counting up to 4 reels simultaneously |
| Features | Inspection Time : 8 sec (1reel) |
| | 12 sec (4reels) |
| Other | Weight : 800 kg |
| | Dimension : 900 X 1,600 X 1,850 mm |

